

CYBERSECURITY



EMERGENCY MANAGEMENT AGENCY
Calhoun County, AL

www.calhounema.org

www.calhounema.org

CYBERSECURITY

Reducing your organizational or personal risk to cyber attacks requires building a culture of cyber readiness.



WHY IS CYBERSECURITY IMPORTANT?

Cybersecurity involves preventing, detecting, and responding to cyberattacks that can have wide ranging effects on the individual, organizations, the community, and at the national level. Cyber attacks are malicious attempts to access or damage a computer system. Cyber attacks can lead to loss of money, theft of personal information, and damage to your reputation and safety. Cyber attacks are malicious attempts to access or damage a computer system.

PHISHING

- **91%** of all cyber attacks start with a phishing email
- **81%** of companies that fall for a phishing attack lose customers

WHAT IS IT?

Phishing is a cyber attack delivered through a link either in a email or on social media. Phishing attacks attempt to use your account to steal personal data or take over your computer. These attack are often difficult to detect.

COMMON SIGNS?

- Suspicious email address
- Emails from strangers that include attachments or links
- Spelling errors or broken sentences
- Suspicious emails that ask for personal data.



For more information visit: www.calhounema.org/cyber-security

RANSOMWARE

- **Ransomware** has become one of the most significant cyber threats facing operations of private sector organizations.
- Very often spread through **phishing emails**.

WHAT IS IT?

Ransomware is an ever-evolving form of malware designed to encrypt files on a device, rendering any files and the systems that rely on them unusable. Malicious actors then demand ransom in exchange for decryption.

PREVENTATIVE ACTIONS

- Updated software
- Never click on links or attachments in unsolicited emails.
- Back up data regularly and store offline.

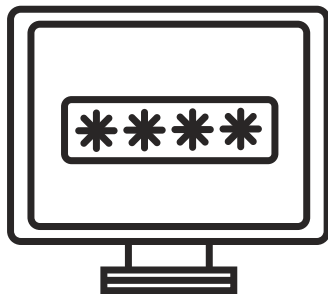


For more information visit: www.calhounema.org/cyber-security

STRONG LOGINS

How to choose a strong password:

- choose a phrase
- use a mixture of numbers and characters
- some upper and lower case letters

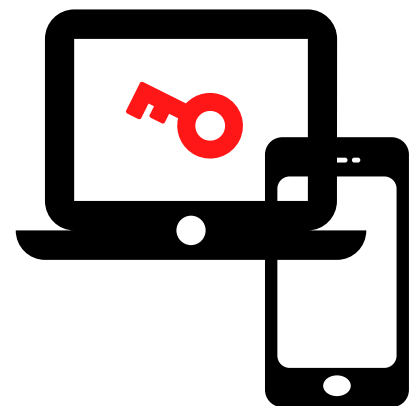


Don't use the Same Password:

While it is easier to reuse passwords, it is important to never repeat passwords when possible.

Consider using two-factor authentication:

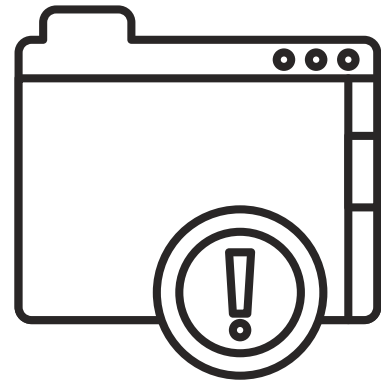
- Helps to identify you through your password as well as another method such as a text.
- This method significantly reduces your chances of being hacked.



For more information visit: www.calhounema.org/cyber-security

STAY UPDATED

It is important to get all your devices updated with the latest software versions to reduce your risk to viruses.



DEFINE UPDATE

Updates are new versions of the software and applications on your phone or computer.

IMPORTANCE

Hackers love security flaws and updates help to fix these vulnerabilities and reduces the risk of becoming a victim to cyber attacks.

AUTO-UPDATE

To help you not forget to update your devices, consider turning on auto-updating.

For more information visit: www.calhounema.org/cyber-security